

user manual



Joomla! Template



travel-in

Travel-in v1.0 - Manual v1.0

bonus**themes.com**

EXTREME JOOMLA TEMPLATING



## Table of Contents

1. Introduction .....	3
2. General information.....	3
2.1 Required software .....	3
2.2 Browser compatibility .....	3
3. Template installation .....	4
3.1 How to install the template in Joomla 1.0.x.....	4
3.2 How to install the template in Joomla 1.5.x.....	4
4. Layout .....	5
4.1 Template map .....	6
4.2 CSS structure .....	7
4.3 Module Suffixes .....	8
5. Template setup.....	9
5.1 Logo setup .....	9
5.2 Banner setup .....	9
5.3 How to show/hide the BonusThemes logo.....	9
5.4 TinyMCE styling .....	9
5.5 PNG fix .....	10
5.6 How to enable/disable CMenu .....	10
5.7 How to set the Joomla menu for CMenu.....	10
5.8 How to enable/disable the SEOCP feature .....	11
5.9 Hidden module positions .....	11
5.10 Custom menu styling .....	11
5.11 Language resources .....	12
5.12 Drop down panels .....	12
6. Configuration settings .....	13
6.1 Basic settings .....	13
6.2 CSC settings .....	14
Appendix A - How to install a template .....	15
Appendix B - How to setup a module .....	18
Appendix C - How to add new positions .....	20





## 1. Introduction

Travel In is the July 2008 Joomla! template from BonusThemes.com.

Travel In, is a fresh summer recipe for Joomla interfaces. Its stylish animations mix with a clean and very professional look that makes this template unique for travel portals. With a few adjustments, a good designer can make it work for a variety of other solutions too.

It supports Joomla! 1.0 and Joomla! 1.5 (native mode) and it is supported by a variety of technologies that provide a very stylish user experience, a significant configuration flexibility for webmasters and content optimization settings for search engines.

Read the following sections to find detailed information and illustrated examples that explain the ways you can use the template.

## 2. General information

### 2.1 *Required software*

Travel In is available in two versions:

The j10 version works with Joomla! 1.0.x and it is recommended to use Joomla! 1.0.15 (the latest version of the Joomla! 1.0.x series).

The j15 version works with Joomla! 1.5.x and it is recommended to use Joomla! 1.5.4 (the latest version of the Joomla! 1.5.x series).

### 2.2 *Browser compatibility*

Travel In is compatible with:

- Firefox 3
- Firefox 2
- Safari 2
- MS Internet Explorer 7
- MS Internet Explorer 6





## 3. Template installation

### *3.1 How to install the template in Joomla 1.0.x*

To install the template you can use the Joomla! installation mechanism for site templates:

Menu > Installers > Template - Sites

Alternatively, you may unpack the template in the /template directory.

To activate the template go to

Menu > Site > Template Manager > Site Templates

select the template and click the “Default” button.

You may also read Appendix A for an illustrated example on installing templates in Joomla.

### *3.2 How to install the template in Joomla 1.5.x*

To install the template you can use the Joomla! installation mechanism for extensions:

Menu > Extensions > Install/Uninstall

Alternatively, you may unpack the template in the /template directory.

To activate the template go to

Menu > Extensions > Template Manager

select the template and click the “Default” button.





## 4. Layout

The layout of Travel In contains 26 visible module positions and 5 invisible for supplementary services.

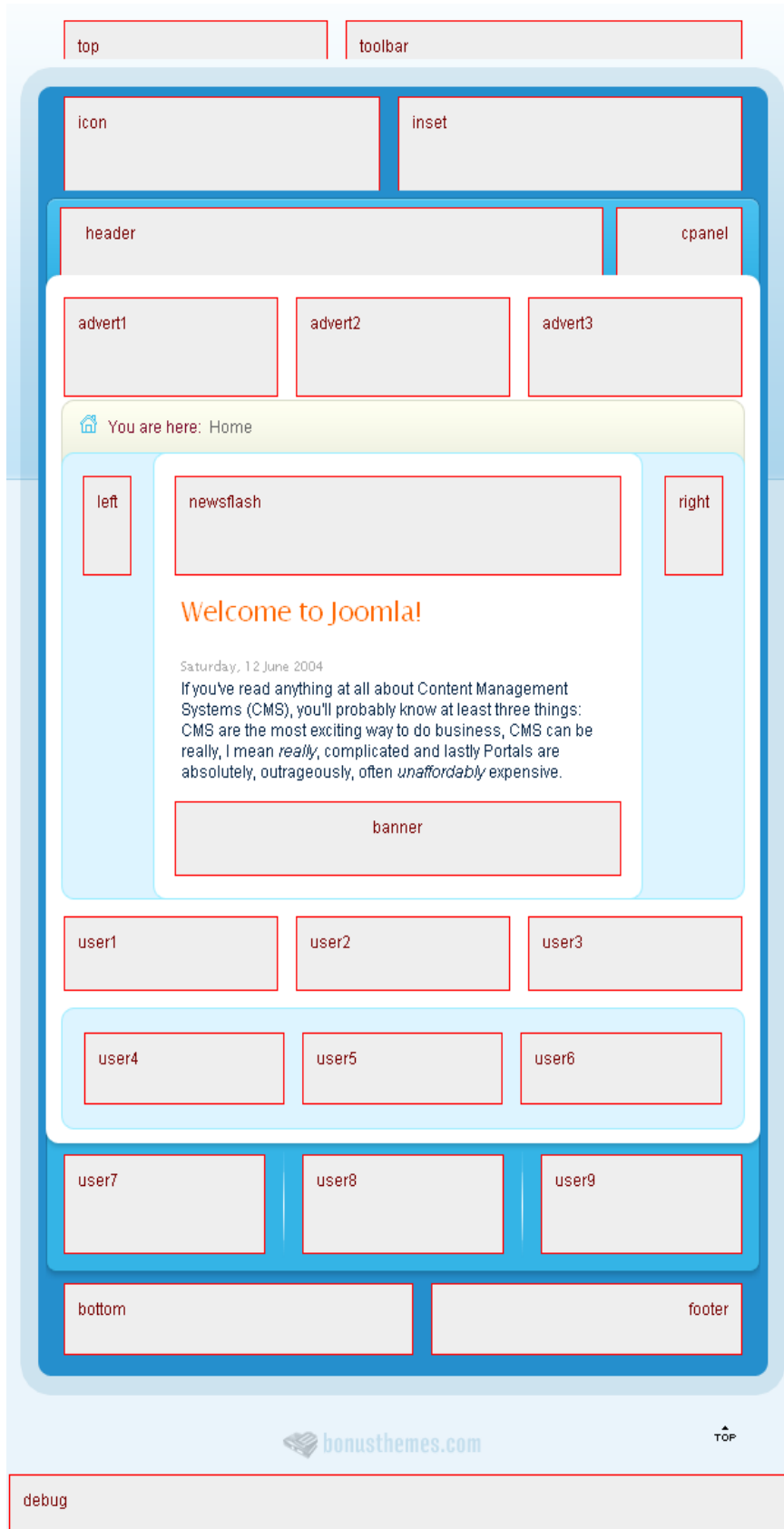
This template uses a collapsible module technology that makes positions disappear if there are no published modules in them. This feature gives you the capability to make arrangements for wider space in your pages.

On the top of its layout, Travel In uses CMenu a menu script that takes input from a Joomla menu. You have the option of disabling this menu and have a module position in its place. This can be set from the configuration file and the name of the position that replaces CMenu is “header”.





## 4.1 Template map



Screen shot of a demonstration installation of Travel In with all the position areas enabled.

The drop down panels are not visible in this screen shot, but their position names are “ddp1” and “ddp2”. Read section 5.12 for more information.

Travel In also supports 5 hidden positions for supplementary services. Read section 5.9 for more information.





## 4.2 CSS structure

Travel In uses the main Joomla template CSS file only for typography and general styling. That main file is /templates/bt\_travelin/css/template\_css.css in the Joomla 1.0 version of the template, and /templates/bt\_travelin/css/template.css in the Joomla 1.5 version.

The file /templates/bt\_travelin/css/layout.css contains CSS definitions that control the layout.

The file /templates/bt\_travelin/css/cmenu.css contains CSS definitions that control the layout of CMenu, the script for the menu on the top area.

Naming system for module positions:

The IDs of the <div> tags that wrap the template positions always start with “pos\_”. For example the module position “user1” takes the id “pos\_user1”.





## 4.3 Module Suffixes

There are 3 module suffixes that match the styling of the template.

Notice that the suffixes start with a dash.

### -style1

-style1

Lorem ipsum dolor sit amet, consectetur adipiscing elit. Nulla sed velit. Mauris massa. Donec eu est. Donec pulvinar mollis elit. In pede mi, porta sed, tincidunt at, rhoncus ut, purus. Curabitur interdum. Praesent est massa, pulvinar vitae, malesuada id, luctus at, nunc.

### -style2

-style2

Lorem ipsum dolor sit amet, consectetur adipiscing elit. Nulla sed velit. Mauris massa. Donec eu est. Donec pulvinar mollis elit. In pede mi, porta sed, tincidunt at, rhoncus ut, purus. Curabitur interdum. Praesent est massa, pulvinar vitae, malesuada id, luctus at, nunc.

### -style3

-style3

Lorem ipsum dolor sit amet, consectetur adipiscing elit. Nulla sed velit. Mauris massa. Donec eu est. Donec pulvinar mollis elit. In pede mi, porta sed, tincidunt at, rhoncus ut, purus. Curabitur interdum. Praesent est massa, pulvinar vitae, malesuada id, luctus at, nunc.







## 5. Template setup

### 5.1 Logo setup

To setup your logo, publish a user module with an uploaded image in any template position.

Example:

1. Upload your logo on your website
2. Create a user module that contains the URL of the image you just uploaded
3. Publish that module in position “icon”

The recommended position for logos is “icon”. If you want to use that position for your logo, the height should be 70 pixels.

### 5.2 Banner setup

To setup a banner, publish a banner module in any template position.

### 5.3 How to show/hide the BonusThemes logo

Joomla 1.0.x users can enable or disable the BonusThemes logo by modifying the setting “btlogo” from the configuration file of the template. Please read section 6 for more details.

Joomla 1.5.x users can make this change from the Template Manager from the administrator’s control panel.

### 5.4 TinyMCE styling

TinyMCE is the editor for the custom text modules. The default installation will use the template background.

If you want to have a clear background while you edit go to Menu > Mambots > Site Mambots > TinyMCE WYSIWYG Editor, and set “Template CSS classes” to “No”.

TinyMCE’s website:

<http://tinymce.moxiecode.com/>





## 5.5 PNG fix

MS Internet Explorer 5 and 6 have trouble rendering the alpha levels (transparencies) of PNG images. The template is equipped with a script that fixes this problem. To enable transparencies in PNG files for MS Internet Explorer 5 and 6, use the CSS class “pngfix”. In some cases images appear distorted. To avoid this distortion provide “width” and “height” attributes in your <img> HTML tags. Alternatively, you can try the CSS class “pngfix\_static”.

PNG fix’s website:

<http://www.twinhelix.com>

## 5.6 How to enable/disable CMenu

CMenu (Classic Menu) is the menu that appears on the top of the page. This menu can be replaced by the module position “header”.

Joomla 1.0.x users can use the setting “header\_menu” by editing the configuration file of the template. Please read section 6 for more details.

Joomla 1.5.x users can make this change from the Template Manager from the administrator’s control panel.

## 5.7 How to set the Joomla menu for CMenu

CMenu by default shows the contents of the Joomla menu “topmenu”.

In order to change the content of CMenu, go to the Joomla control panel for menus and add/remove/edit the menu from there.

If you want to change the menu to something other than “topmenu”:

Joomla 1.0.x users can modify the setting “header\_menu\_name” by editing the configuration file of the template. Please read section 6 for more details.

Joomla 1.5.x users can make this change from the Template Manager from the administrator’s control panel.





## 5.8 How to enable/disable the SEOCP feature

SEOCP (Search Engine Optimization Content Positioning) is a feature that controls the position of the main content of the pages.

When SEOCP is enabled the content is internally positioned on the top of the HTML code and this helps search engines find and analyze the content easier. When the page loads, a JavaScript script moves the content to the proper position so that the visual structures can display it in the way the human eye can understand better.

SEOCP needs JavaScript to work. This means that users with JavaScript disabled will not be able to read the content of the page.

By default, SEOCP is disabled. To enable SEOCP:

Joomla 1.0.x users can modify the setting “seocp” by editing the configuration file of the template. Please read section 6 for more details.

Joomla 1.5.x users can make this change from the Template Manager from the administrator’s control panel.

## 5.9 Hidden module positions

Travel In includes 5 hidden position for supplementary functionality. The names of these positions are “aux1”, “aux2”, “aux3”, “aux4”, “aux5”.

Joomla 1.0.x users will have to create these positions manually. Please read Appendix C to find how to create a new module position in Joomla 1.0.x .

## 5.10 Custom menu styling

The Travel In template has a default way of laying out menus. It uses a specific set of CSS rules that may not appear nice in exception cases. One such exception is a horizontal menu.

To make the template ignore the default layout for menus you can use a custom “Menu Class Suffix”. This should not be confused with “Module Class Suffix”. From the administrator’s control panel go to Modules > Site Modules, open the menu module that needs to have a different layout, set the “Menu Class Suffix” to any value (type for example “mystyle”) and click the “Save” button.





## 5.11 Language resources

The Travel In template uses one phrase in the English language in the path way area. This phrase reads: “You are here:”.

In order to change that to a different phrase or translate it to another language please follow the next steps:

Joomla 1.0.x users open the desired language file and add the constant `PATHWAY_START`. The default language file is “/language/english.php”.

Joomla 1.5.x users, after installing the template, open the desired language file and add the resource “YOU ARE HERE:”. The default language file is “/language/en-GB/en-GB.tpl\_bt\_travelin.ini”. To translate to another language, replace “en-GB” with the target locale.

## 5.12 Drop down panels

The Travel In template uses is designed to support two sliding panels. These panels take input from regular Joomla module positions. The names of these positions are “ddp1” (drop down panel 1) for the first panel and “ddp2” (drop down panel 2) for the second.

Joomla 1.0.x users will have to create these positions manually. Please read Appendix C to find how to create a new module position in Joomla 1.0.x .

To add modules to each of these positions, all you have to do is publish a module in them. Make sure you have the “Show title” option enabled because that will be used to set the caption of the panel’s tab.





## 6. Configuration settings

### Notice:

Joomla 1.0 users have to edit the `/templates/bt_travelin/config.php` file to make these changes take effect.

Joomla 1.5 users have to use the Template Manager from the administrator's control panel. For CSC configurations please read the next section.

Travel In configurations are based in the `/templates/bt_travelin/config.php` file. Joomla 1.0 users will have to edit this file in order to make necessary adjustments. Joomla 1.5 users can do the same adjustments from the Template Manager. The CSC technology allows you to have a default configuration and additional configurations for specified components. This can sometimes be very useful. In order to do that you will have to edit the configuration file regardless of the Joomla version you use.

We strongly recommend you to edit the configuration file only if you have basic knowledge of the PHP syntax.

### 6.1 Basic settings

#### **width**

Width of entire page in pixels

Example: 960 sets it to 960 pixels

Default value: 960

#### **btlogo**

Shows the BonusThemes logo

Values: on, off

Example: "on" makes the logo visible

Default value: on

#### **header\_menu**

Show menu or position header

Values: menu, header

Example: "menu" makes the top area show the menu, "header" makes the top area show the position header

Default value: menu

#### **header\_menu\_name**

Source menu for header

Values: Any menu name from the Joomla CMS

Default value: topmenu

#### **seocp**

Enables or disables SEOCP

Values: on, off

Example: "off" disables SEOCP

Default value: off





## 6.2 CSC settings

Notice: This sections is for users with advanced knowledge in PHP.

CSC (Component Specific Configuration) is a technology that allows you to set different settings for different components.

The default code looks like that:

```
$tpl_config['component']['*'] = array(
    ... configurations ...
);
```

The asterisk has a special meaning and it denotes the default values. To write a different configuration set for a component, add another block but replace the asterisk with the component name:

```
$tpl_config['component']['com_frontpage'] = array(
    ... configurations ...
);
```

This system is as simple as this for Joomla 1.0 . Joomla 1.5 has its own system of handling template configurations using the params.ini file and the Template Manager for an interface. In order to maintain compatibility with this system, the default settings in Joomla 1.5 are set by the params.ini file and of course you can edit it using the Template Manager from the administrator's control panel.

If you don't like this in Joomla 1.5 and you want to have full control from the config.php file set the variable `$tpl_config['default']` to 1. With this setting the params.ini file will be ignored.





## Appendix A - How to install a template

To install a template in Joomla! 1.0.x follow the next 6 steps:

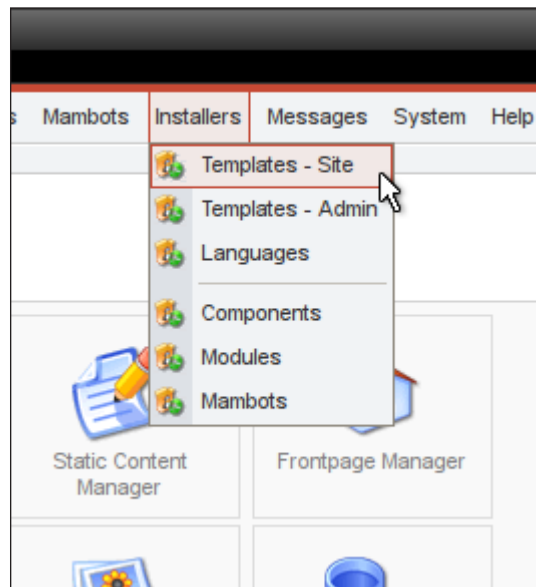
### Step 1

Get into the administrator's control panel with your browser.

The URL usually looks like

<http://www.example.com/administrator/>

### Step 2



Go to the menu *Installers > Templates - Site*

### Step 3

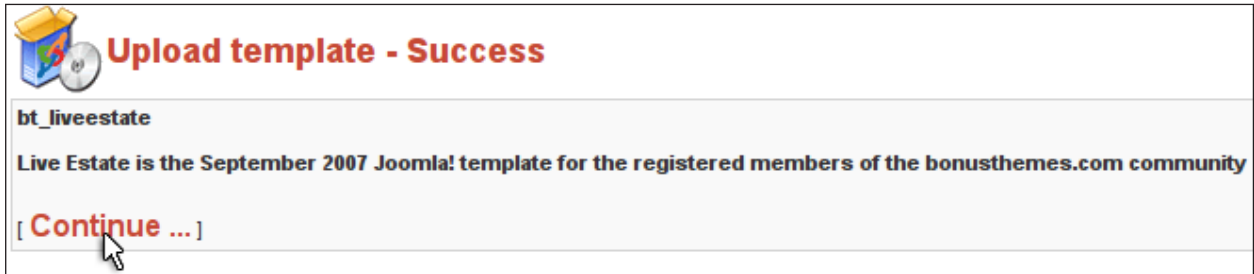


Click the *Browse* button to find the archive of the template, and then click *Upload File & Install* to perform the installation procedure.



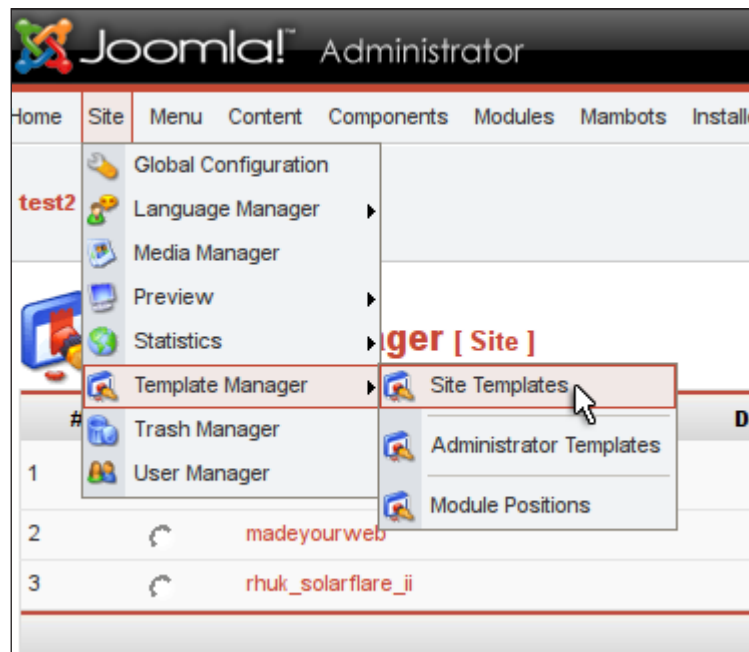


#### Step 4



If the installation was successful you will be able to see a success message like the one in the image.

#### Step 5



After step 4 you should already be in the *Template Manager* page.

In case you are not in that page yet, go to the menu and click on


*Site > Template Manager > Site Templates*







## Step 6



The screenshot shows the Joomla! Administrator interface. The top navigation bar includes links for Home, Site, Menu, Content, Components, Modules, Mambots, Installers, Messages, System, and Help. The breadcrumb trail indicates the current location is 'test2 / com\_templates'. The main heading is 'Template Manager [ Site ]'. Below this is a table with columns: #, Name, Default, Assigned, Author, and Version. The table lists three templates: 'bt\_liveestate' (version 1.0, author BonusThemes.com), 'madeyourweb' (version 1.3, author Marc Hinse), and 'rhuk\_solarflare\_ii' (version 2.2, author rhuk, marked as default with a green checkmark). A yellow circle labeled '1' highlights the 'rhuk\_solarflare\_ii' row. Another yellow circle labeled '2' highlights the 'Default' button above the table. At the bottom, there are pagination controls showing '<< Start < Previous 1 Next > End >>' and a display count of 'Display # 30 Results 1 - 3 of 3'.

#	Name	Default	Assigned	Author	Version
1	bt_liveestate			BonusThemes.com	1.0
2	madeyourweb			Marc Hinse	1.3
3	rhuk_solarflare_ii	✓		rhuk	2.2

From the *Template Manager* page click on the template name you just installed and then click the *Default* button to make that template the default one.



## Appendix B - How to setup a module

To setup a module in Joomla! 1.0.x follow the next 4 steps:

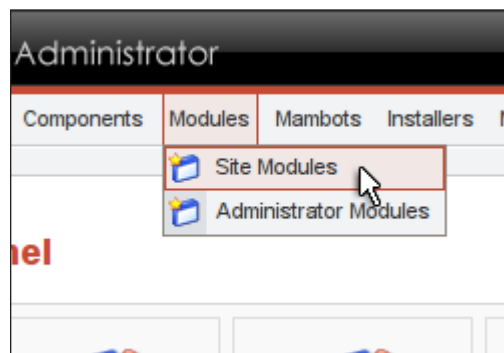
### Step 1

Get into the administrator's control panel with your browser.

The URL usually looks like

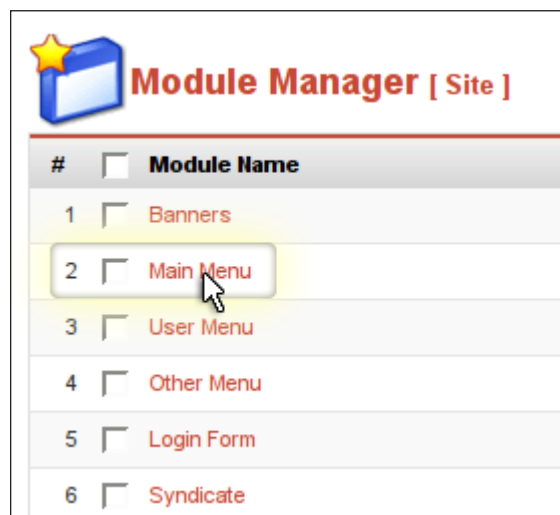
<http://www.example.com/administrator/>

### Step 2



Go to the menu *Modules > Site Modules*

### Step 3



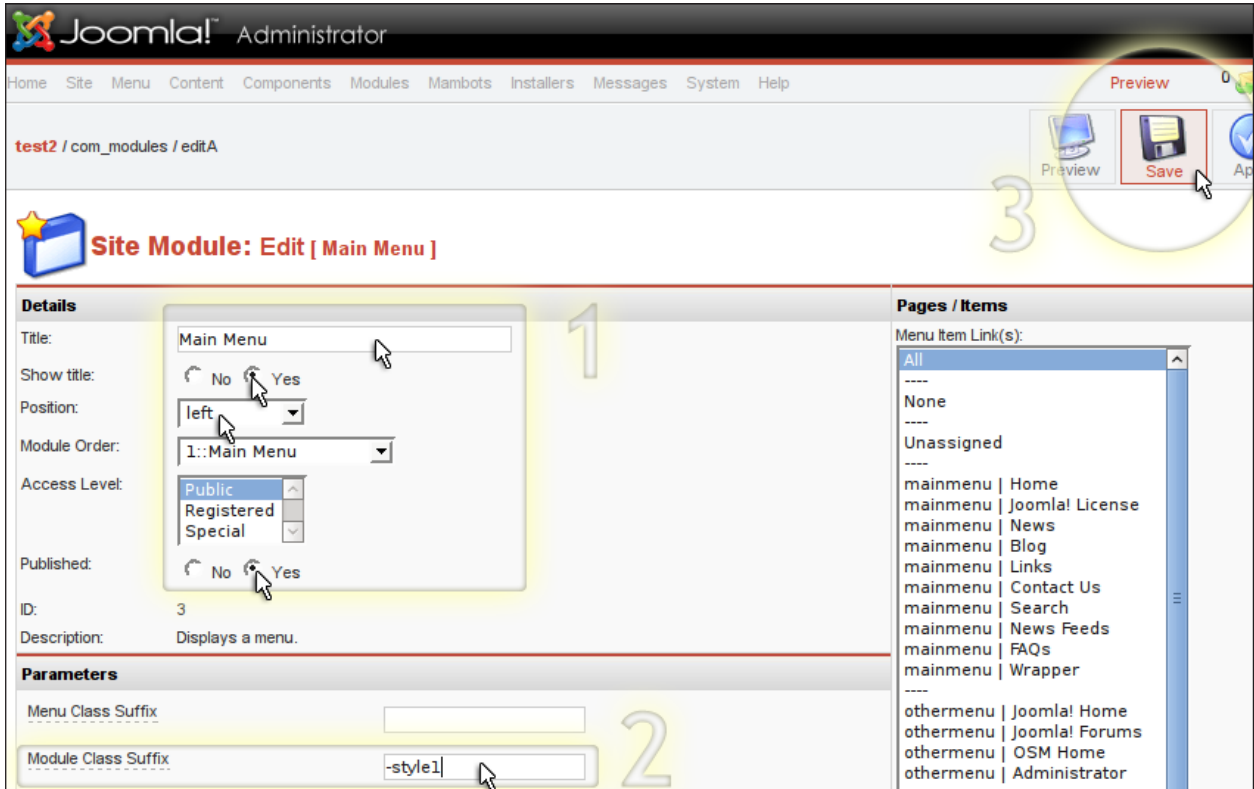
Find the module you want to edit and click it.

Note: If you cannot find your module perhaps there are too many modules split in pages. Go through the pages to find your module, or use the filters on the top right corner to limit the list of visible modules.





## Step 4



Now you are in the page that controls the module.

From the Details area you can control many features including:

- Set the title of the module
- Show or hide the title
- Set the position of the module
- Publish or unpublish the module

From the Parameters area you can also control many features including the ability to

- Set the Module Class Suffix

To save your changes click the **Save** button in the top right corner.



## Appendix C - How to add new positions

This section shows you how to add a new position in Joomla! 1.0.x . In Joomla 1.5.x positions are already set up.

To add a new position for module in Joomla! 1.0.x follow the next 3 steps:

### Step 1

Get into the administrator's control panel with your browser.

The URL usually looks like  
<http://www.example.com/administrator/>

### Step 2

Go to the menu Site > Template Manager > Module Positions

### Step 3

Add the name of the position under a "Position" column and click the "Save" when done.





**bonus**themes.com

E X T R E M E   J O O M L A   T E M P L A T I N G

- Design: Panos Gazepidis - Mediagrafix - <http://www.mediagrafix.gr>
- Development: Alex Stylianos - Creative Pulse - <http://www.creativepulse.eu>

---

Distribution - Support: <http://www.bonusthemes.com>