

Fracture Installation

Necessary Files

Files required for the template to function:

- **Template (Standalone)** *rt_fracture.zip* - Standalone template file.
- **Template (Bundle)** *rt_fracture-bundle.zip* - Template plus Gantry Component.
- **RokNavMenu** *rt_fracture-extensions.zip* (**unzip first**) or *mod_roknavmenu_j16.zip* - Required for the menu to work.

Note: The **Bundle** Template is only necessary if the Gantry Library is **NOT** installed at: */components/com_gantry*.

Additional Files

Ancillary files for the template:

- **Source PNG(s)** *rt_fracture-sources.zip* - Adobe® Fireworks PNG source file(s) and any applicable fonts.
- **Extensions** *rt_fracture-extensions.zip* - All extensions for the template.
- **RocketLauncher** *rt_fracture-rocketlauncher.zip* - Demo replica installer.

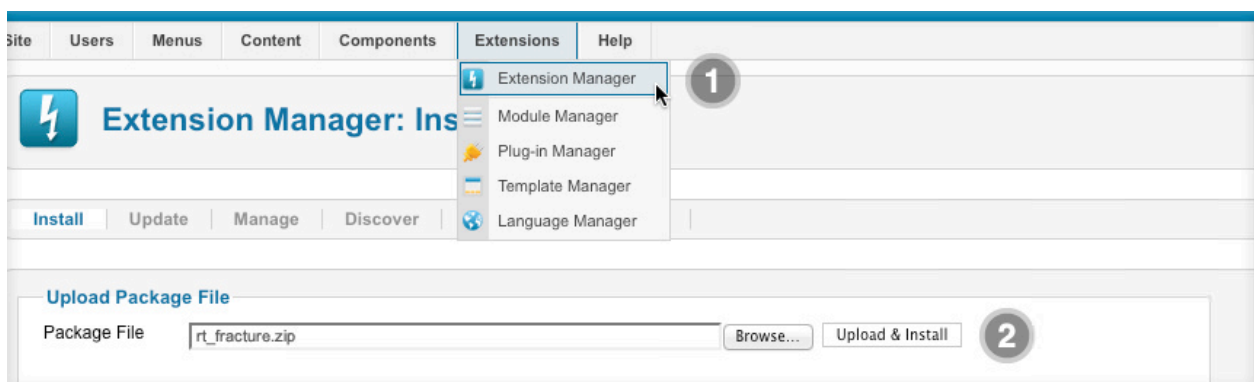
The latest extensions can be downloaded from the Extensions Download here:

<http://www.rockettheme.com/extensions-joomla>

Installation Instructions

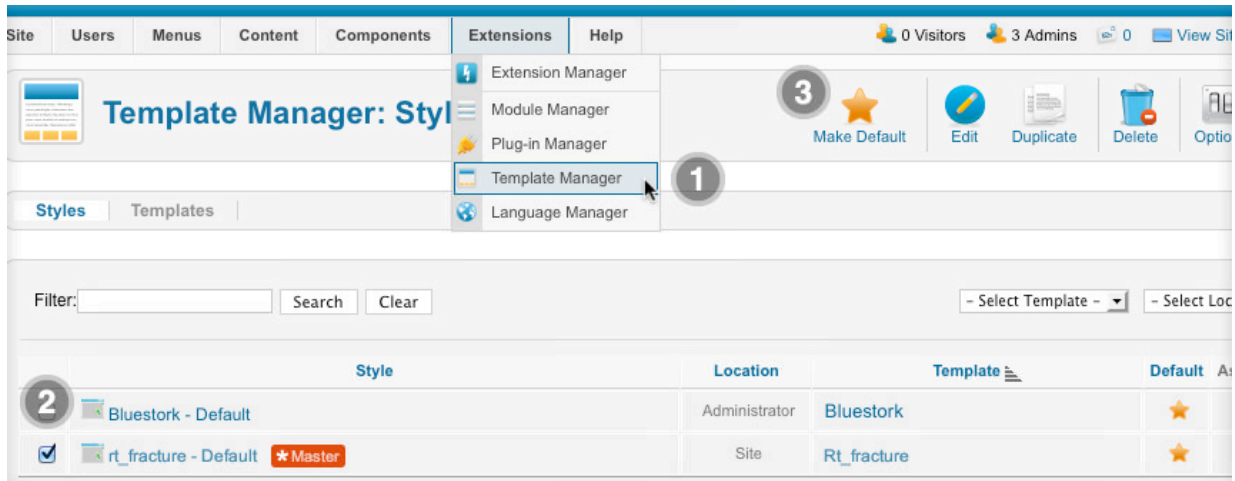
Step 1 - Installation

1. Install from **Admin** → **Extensions** → **Extensions Manager**
2. Browse for *rt_fracture.zip* and click **Upload & Install**



Step 2 - Template Default

1. Make the template default at **Admin** → **Extensions** → **Template Manager**
2. Select *rt_fracture*
3. Press **Make Default**



RocketLauncher Instructions

We always recommend installing a **RocketLauncher** first to trial and understand the template more effectively. It must be installed as **new**, and **not** over an existing Joomla install.

Step 1 - Upload

- **Download** the RocketLauncher
- **Unzip** the file
- **Upload** the created folder to your server

Note: You can upload all the files via FTP, or use cPanel or SSH to upload the zip and unzip directly onto the server. Enquire with your hosting provider.

Step 2 - Installation

- Go to www.yoursite.com/*folder name*
- Follow the Installation instructions
- Ensure you click *Install Sample Data* during installation
- Remove the installation folder in the Installation interface