

user manual



Joomla! Template



focus

Focus v1.0 - Manual v1.0

bonusthemes.com

EXTREME JOOMLA TEMPLATING



Table of Contents

1. Introduction	3
2. General information.....	3
2.1 Required software	3
2.2 Browser compatibility	3
3. Template installation	4
3.1 How to install the template in Joomla 1.0.x.....	4
3.2 How to install the template in Joomla 1.5.x.....	4
4. Layout	5
4.1 Template map	6
4.3 CSS structure	7
4.4 Spacers	7
4.5 Module Suffixes	8
5. Template setup.....	9
5.1 Logo setup	9
5.2 Banner setup	9
5.3 How to show/hide the BonusThemes logo.....	9
5.4 TinyMCE styling	9
5.5 PNG fix	10
5.6 How to enable/disable CMenu	10
5.7 How to set the Joomla menu for CMenu.....	10
5.8 How to enable/disable the SEOCP feature	10
5.9 Hidden module positions	10
5.10 Special feature: Sliding tabs	11
5.11 Special feature: Home button	11
5.12 Special feature: Search button	11
6. Configuration settings	12
6.1 Basic settings	12
6.2 CSC settings	14
Appendix A - How to install a template	15
Appendix B - How to setup a module	18





1. Introduction

Focus is the June 2008 Joomla! template from BonusThemes.com.

Focus is a stylish dark theme that features new exciting animation effect technologies. It is ideal for presentation websites, game or music portals.

It supports Joomla! 1.0 and Joomla! 1.5 (native mode) and it is equipped with a variety of technologies that provide a very stylish user experience, a significant configuration flexibility for webmasters and content optimization settings for search engines.

Read the following sections to find detailed information and illustrated examples that explain the ways you can use the template.

2. General information

2.1 *Required software*

Focus is available in two versions:

The j10 version works with Joomla! 1.0.x and it is recommended to use Joomla! 1.0.15 (the latest version of the Joomla! 1.0.x series).

The j15 version works with Joomla! 1.5.x and it is recommended to use Joomla! 1.5.2 (the latest version of the Joomla! 1.5.x series).

2.2 *Browser compatibility*

Ecom is compatible with:

- Firefox 3
- Firefox 2
- Safari 2
- MS Internet Explorer 7
- MS Internet Explorer 6





3. Template installation

3.1 How to install the template in Joomla 1.0.x

To install the template you can use the Joomla! installation mechanism for site templates:

Menu > Installers > Template - Sites

Alternatively, you may unpack the template in the /template directory.

To activate the template go to

Menu > Site > Template Manager > Site Templates

select the template and click the “Default” button.

You may also read Appendix A for an illustrated example on installing templates in Joomla.

3.2 How to install the template in Joomla 1.5.x

To install the template you can use the Joomla! installation mechanism for extensions:

Menu > Extensions > Install/Uninstall

Alternatively, you may unpack the template in the /template directory.

To activate the template go to

Menu > Extensions > Template Manager

select the template and click the “Default” button.





4. Layout

The layout of Focus contains 22 visible module positions and one invisible for supplementary services.

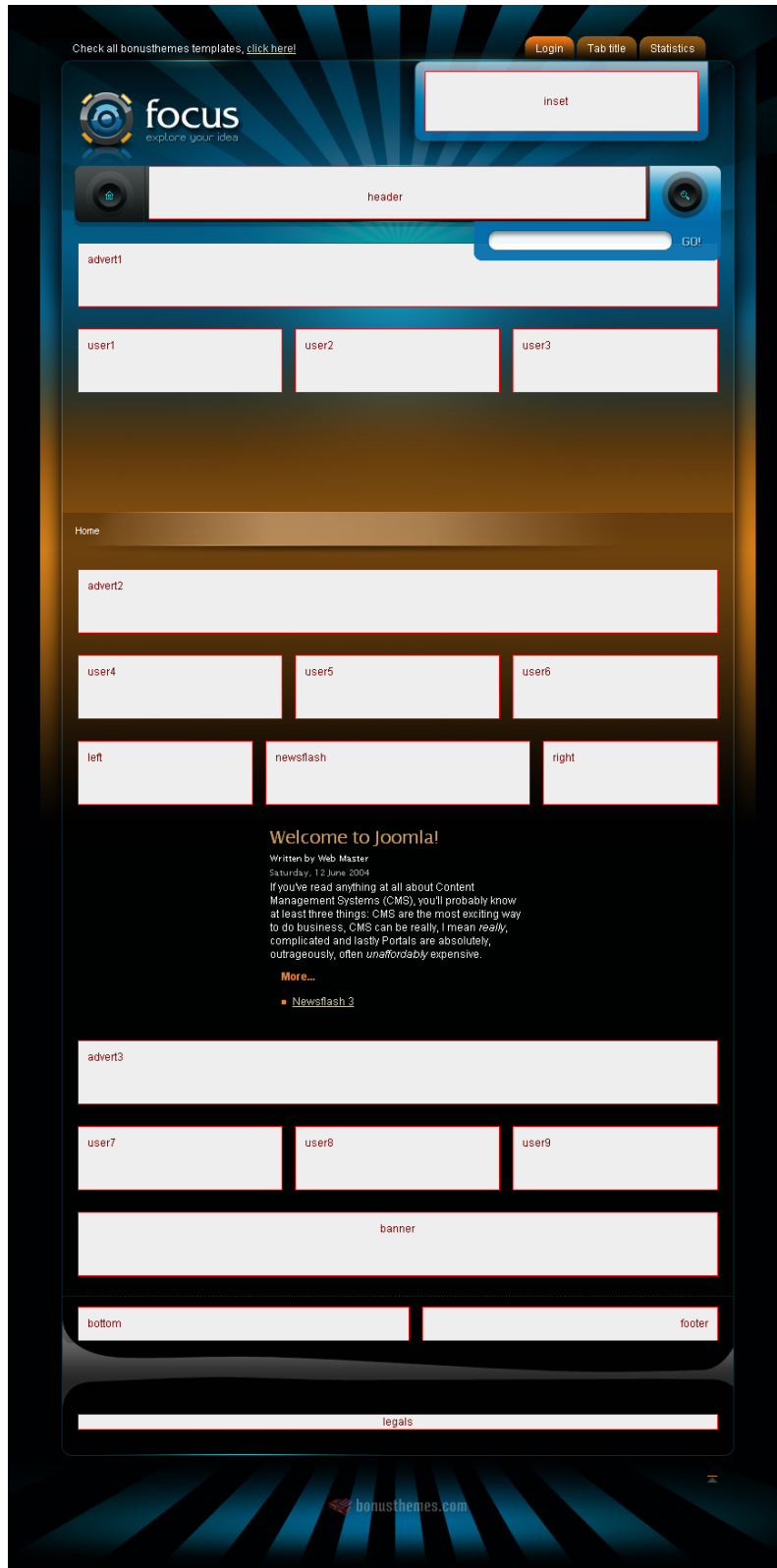
This template uses a collapsible module technology that makes positions disappear if there are no published modules in them. This feature gives you the capability to make arrangements for wider space in your pages.

On the top of its layout, Focus uses CMenu a menu script that takes input from a Joomla menu. You have the option of disabling this menu and have a module position in its place. This can be set from the configuration file and the name of the position that replaces CMenu is “header”.





4.1 Template map



Screen shot of a demonstration installation of Focus with all the position areas enabled.





4.3 CSS structure

Focus uses the main Joomla template CSS file only for typography and general styling. That main file is /templates/bt_focus/css/template_css.css in the Joomla 1.0 version of the template, and /templates/bt_focus/css/template.css in the Joomla 1.5 version.

The file /templates/bt_focus/css/layout.css contains CSS definitions that control the layout.

The file /templates/bt_focus/css/cmenu.css contains CSS definitions that control the layout of CMenu, the script for the menu on the top area.

Naming system for module positions:

The IDs of the <div> tags that wrap the template positions always start with “pos_”. For example the module position “user1” takes the id “pos_user1”.

4.4 Spacers

This template outputs separate <div>s after specific positions called spacers. You can use them to modify the layout on the ending of those positions. They are in the layout.css file and here is a list of the spacer names and the positions they follow:

▼ Spacer name	▼ Preceding positions
spacer1	advert1
spacer2	advert2
spacer3	user4, user5, user6
spacer4	newsflash
spacer5	advert3
spacer6	user7, user8, user9
spacer7	banner
spacer8	wider main body area





4.5 Module Suffixes

There are 3 module suffixes that match the styling of the template.

Notice that the suffixes start with a dash.

-style1

Lorem ipsum dolor sit amet, consectetur adipiscing elit. Nulla sed velit. Mauris massa. Donec eu est. Donec pulvinar mollis elit. In pede mi, porta sed, tincidunt at, rhoncus ut, purus. Curabitur interdum. Praesent est massa, pulvinar vitae, malesuada id, luctus at, nunc. In hac habitasse platea dictumst.

-style1

Formats the header only.

-style2

Lorem ipsum dolor sit amet, consectetur adipiscing elit. Nulla sed velit. Mauris massa. Donec eu est. Donec pulvinar mollis elit. In pede mi, porta sed, tincidunt at, rhoncus ut, purus. Curabitur interdum. Praesent est massa, pulvinar vitae, malesuada id, luctus at, nunc. In hac habitasse platea dictumst.

-style2

Displays a background with an image on the bottom left corner.

-style3

Lorem ipsum dolor sit amet, consectetur adipiscing elit. Nulla sed velit. Mauris massa. Donec eu est. Donec pulvinar mollis elit. In pede mi, porta sed, tincidunt at, rhoncus ut, purus. Curabitur interdum. Praesent est massa, pulvinar vitae, malesuada id, luctus at, nunc. In hac habitasse platea dictumst.

-style3

Displays a background.





5. Template setup

5.1 Logo setup

The Focus template has a complex layout with overlapping gradients and graphics. In order to help users customize the logo easily, we constructed a unified area that contains the logo as well as other parts of the template's graphics.

To setup your own logo, open the archive with the PSD source files and locate the file "logo.jpg". Use your favorite image editing tool to add your logo and then save that file in a very good quality so that the background gradients show up nice. The file should be saved as a JPEG file with the name "logo.jpg" and should be positioned at the "/templates/bt_focus/images/layout/" directory.

5.2 Banner setup

To setup a banner, publish a banner module in any template position.

5.3 How to show/hide the BonusThemes logo

Joomla 1.0.x users can enable or disable the BonusThemes logo by modifying the setting "btlogo" from the configuration file of the template. Please read section 6 for more details.

Joomla 1.5.x users can make this change from the Template Manager from the administrator's control panel.

5.4 TinyMCE styling

TinyMCE is the editor for the custom text modules. The default installation will use the template background.

If you want to have a clear background while you edit go to Menu > Mambots > Site Mambots > TinyMCE WYSIWYG Editor, and set "Template CSS classes" to "No".

TinyMCE's website:

<http://tinymce.moxiecode.com/>

5.5 PNG fix

MS Internet Explorer 5 and 6 have trouble rendering the alpha levels (transparencies) of PNG images. The

template is equipped with a script that fixes this problem. To enable transparencies in PNG files for MS Internet Explorer 5 and 6, use the CSS class "pngfix". In some cases images appear distorted. To avoid this

distortion provide "width" and "height" attributes in your HTML tags. Alternatively, you can try the CSS class "pngfix_static".

PNG fix's website:

<http://www.twinhelix.com>





5.6 How to enable/disable CMenu

CMenu (Classic Menu) is the menu that appears on the top of the page. This menu can be replaced by the module position “header”.

Joomla 1.0.x users can use the setting “header_menu” by editing the configuration file of the template. Please read section 6 for more details.

Joomla 1.5.x users can make this change from the Template Manager from the administrator’s control panel.

5.7 How to set the Joomla menu for CMenu

CMenu by default shows the contents of the Joomla menu “topmenu”.

In order to change the content of CMenu, go to the Joomla control panel for menus and add/remove/edit the menu from there.

If you want to change the menu to something other than “topmenu”:

Joomla 1.0.x users can modify the setting “header_menu_name” by editing the configuration file of the template. Please read section 6 for more details.

Joomla 1.5.x users can make this change from the Template Manager from the administrator’s control panel.

5.8 How to enable/disable the SEOCP feature

SEOCP (Search Engine Optimization Content Positioning) is a feature that controls the position of the main content of the pages.

When SEOCP is enabled the content is internally positioned on the top of the HTML code and this helps search engines find and analyze the content easier. When the page loads, a JavaScript script moves the content to the proper position so that the visual structures can display it in the way the human eye can understand better.

SEOCP needs JavaScript to work. This means that users with JavaScript disabled will not be able to read the content of the page.

By default, SEOCP is disabled. To enable SEOCP:

Joomla 1.0.x users can modify the setting “seocp” by editing the configuration file of the template. Please read section 6 for more details.

Joomla 1.5.x users can make this change from the Template Manager from the administrator’s control panel.

5.9 Hidden module positions

Focus includes one hidden position for supplementary functionality. This is the position “toolbar”. Hidden module positions work as input for modules for special effects.





5.10 Special feature: Sliding tabs

The Focus template uses the top right corner to show modules with impressive animations. On that area you are free to publish any modules you choose, just notice that the space is limited and fixed. The animation process opens and closes with fading effects. When one tab is open and the user moves to another tab a sliding effect performs the switch.

To add modules to the top right corner all you have to do is publish modules in the position “inset”. Make sure you have the “Show title” option enabled because that will be used to put a caption to your tab. To change the order of the tabs, use the Joomla control panel for modules to rearrange their order.

5.11 Special feature: Home button

On the left side of the menu area, you can make Focus show a home button. This button balances with the search button on the right side.

To enable or disable the home button:

Joomla 1.0.x users can modify the setting “show_home” by editing the configuration file of the template. Please read section 6 for more details.

5.12 Special feature: Search button

On the right side of the menu area, you can make Focus show a search button that shows a search input control. The search box appears with a cool animation when the user clicks the search button. While visible the user can click again the search button to make disappear. This button balances with the home button on the left side.

To enable or disable the home button:

Joomla 1.0.x users can modify the setting “show_search” by editing the configuration file of the template. Please read section 6 for more details.

Joomla 1.5.x users can make this change from the Template Manager from the administrator’s control panel.





6. Configuration settings

Ecom configurations are based in the `/templates/bt_Ecom/config.php` file. Joomla 1.0 users will have to edit this file in order to make necessary adjustments. Joomla 1.5 users can do the same adjustments from the Template Manager.

The CSC technology allows you to have a default configuration and additional configurations for specified components. This can sometimes be very useful. In order to do that you will have to edit the configuration file regardless of the Joomla version you use.

We strongly recommend you to edit the configuration file only if you have basic knowledge of the PHP syntax.

6.1 Basic settings

Notice:

Joomla 1.0 users have to edit the `/templates/bt_ingenio/config.php` file to make these changes take effect.

Joomla 1.5 users have to use the Template Manager from the administrator's control panel. For CSC configurations please read the next section.

btlogo

Shows the BonusThemes logo

Values: on, off

Example: "on" makes the logo visible

Default value: on

header_menu

Show menu or position header

Values: menu, header

Example: "menu" makes the top area show the menu, "header" makes the top area show the position header

Default value: menu

header_menu_name

Source menu for header

Values: Any menu name from the Joomla CMS

Default value: topmenu

seocp

Enables or disables SEOCP

Values: on, off

Example: "off" disables SEOCP

Default value: off





show_home

Shows or hides the home button on the left side of the menu area

Values: on, off

Example: “on” makes the home button visible

Default value: on

show_search

Shows or hides the search button on the right side of the menu area

Values: on, off

Example: “on” makes the search button visible

Default value: on

search_itemid

The internal ItemId of the page that shows the search results.

This setting is for the Joomla 1.0 version only.

Default value: 0

pos_left_width

Width of position left

Example: 200 sets it to 200 pixels

Default value: 200

pos_right_width

Width of position right

Example: 200 sets it to 200 pixels

Default value: 200





6.2 CSC settings

Notice: This sections is for users with advanced knowledge in PHP.

CSC (Component Specific Configuration) is a technology that allows you to set different settings for different components.

The default code looks like that:

```
$tpl_config['component']['*'] = array(
    ... configurations ...
);
```

The asterisk has a special meaning and it denotes the default values. To write a different configuration set for a component, add another block but replace the asterisk with the component name:

```
$tpl_config['component']['com_frontpage'] = array(
    ... configurations ...
);
```

This system is as simple as this for Joomla 1.0 . Joomla 1.5 has its own system of handling template configurations using the params.ini file and the Template Manager for an interface. In order to maintain compatibility with this system, the default settings in Joomla 1.5 are set by the params.ini file and of course you can edit it using the Template Manager from the administrator's control panel.

If you don't like this in Joomla 1.5 and you want to have full control from the config.php file set the variable `$tpl_config['default']` to 1. With this setting the params.ini file will be ignored.





Appendix A - How to install a template

To install a template in Joomla! 1.0.x follow the next 6 steps:

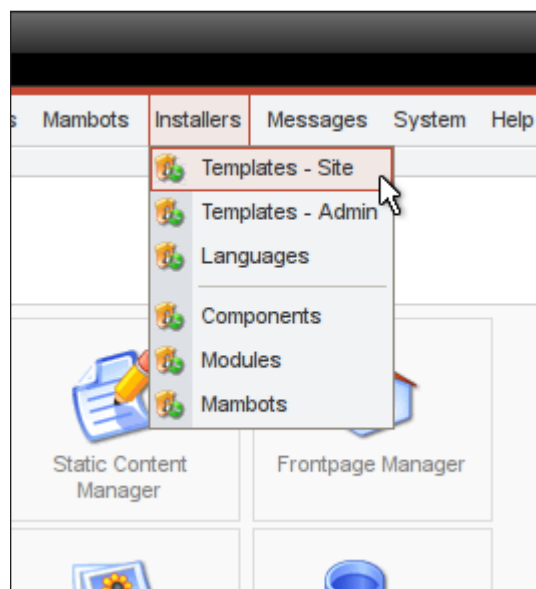
Step 1

Get into the administrator's control panel with your browser.

The URL usually looks like

<http://www.example.com/administrator/>

Step 2



Go to the menu *Installers > Templates - Site*

Step 3

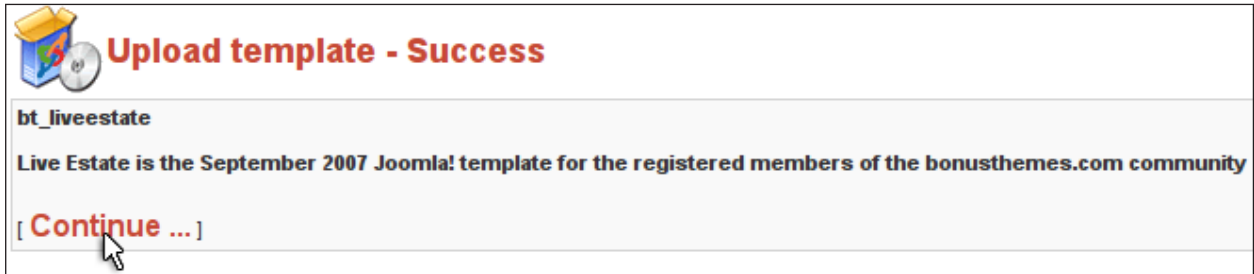


Click the *Browse* button to find the archive of the template, and then click *Upload File & Install* to perform the installation procedure.



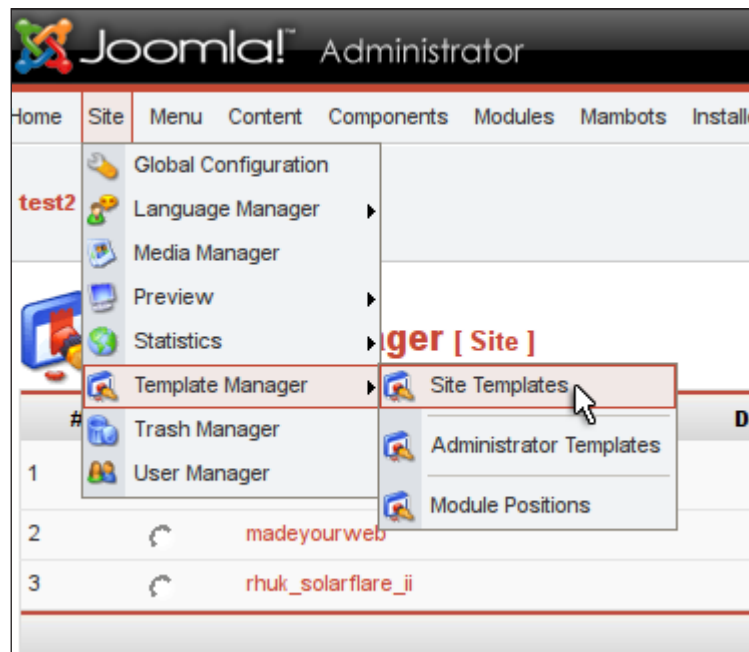


Step 4



If the installation was successful you will be able to see a success message like the one in the image.

Step 5



After step 4 you should already be in the *Template Manager* page.

In case you are not in that page yet, go to the menu and click on

Site > Template Manager > Site Templates





Step 6

Joomla! Administrator

Home Site Menu Content Components Modules Mambots Installers Messages System Help

test2 / com_templates

Template Manager [Site]

#	Name	Default	Assigned	Author	Version
1	bt_liveestate			BonusThemes.com	1.0
2	madeyourweb			Marc Hinse	1.3
3	rhuk_solarflare_ii	✓		rhuk	2.2

<< Start < Previous 1 Next > End >>

Display # 30 Results 1 - 3 of 3

From the *Template Manager* page click on the template name you just installed and then click the *Default* button to make that template the default one.



Appendix B - How to setup a module

To setup a module in Joomla! 1.0.x follow the next 4 steps:

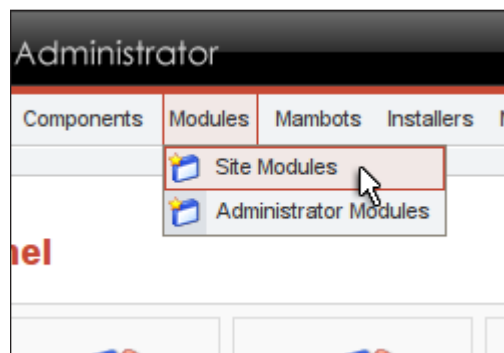
Step 1

Get into the administrator's control panel with your browser.

The URL usually looks like

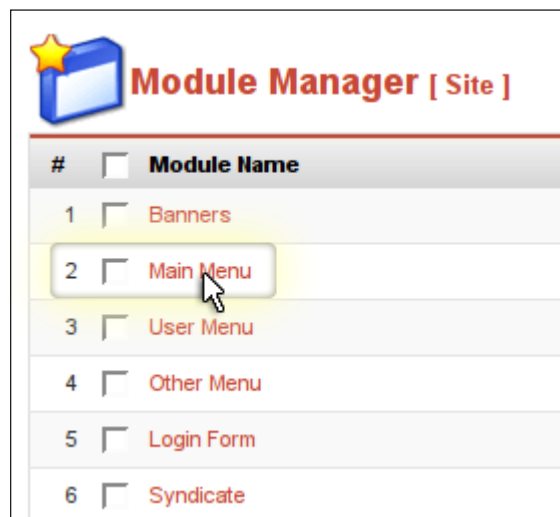
<http://www.example.com/administrator/>

Step 2



Go to the menu *Modules > Site Modules*

Step 3



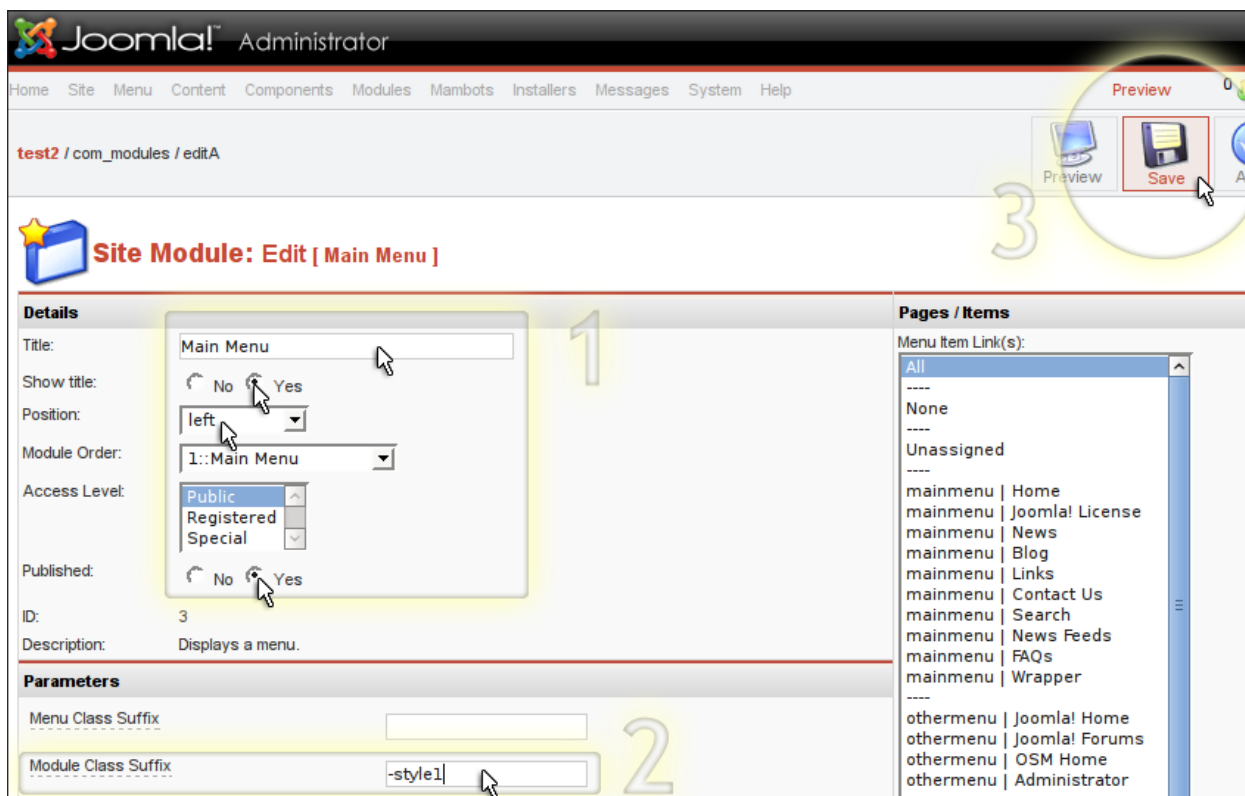
Find the module you want to edit and click it.

Note: If you cannot find your module perhaps there are too many modules split in pages. Go through the pages to find your module, or use the filters on the top right corner to limit the list of visible modules.





Step 4



Now you are in the page that controls the module.

From the Details area you can control many features including:

- Set the title of the module
- Show or hide the title
- Set the position of the module
- Publish or unpublish the module

From the Parameters area you can also control many features including the ability to

- Set the Module Class Suffix

To save your changes click the **Save** button in the top right corner.



bonusthemes.com

E X T R E M E J O O M L A T E M P L A T I N G

- Design: Panos Gazepidis - Mediagrafix - <http://www.mediagrafix.gr>
- Development: Alex Stylianos - Creative Pulse - <http://www.creativepulse.eu>

Distribution - Support: <http://www.bonusthemes.com>